



Web: <https://apsvic.org.au/aps-grampians/>

Email: grampians@apsvic.org.au



NEXT MEETING
7.30pm Tuesday 20th August
Helen Lovell presents Neutrog
Pomonal Hall
Surnames A-K please bring something to share

Contents

Contents	1
Next Meeting	1
From the President	2
40th Pomonal Native Flower Show	4
Last Meeting	5
Flower Table	6
Pomonal Community Nursery	7
Grampians Plants	8
Member matters	9
Grampians Group Calendar 2024	10

Next Meeting



<Guest speaker is Helen Lovell from Neutrog, (with samples of course!).
Pomonal Hall Tuesday 20th July 7.30pm.

Helen will be discussing the Neutrog biological journey through their extensive Research and Development programme, and how the importance of beneficial bacteria and fungi in our soils, impacts all growers, farmers and home gardeners.

Spring is just around the corner, come along to our first evening meeting for a while. Discussion, rosters and updates on our Flower Show which is just one month after the meeting! Optional dinner beforehand at Halls Gap Hotel 5.45 pm

From the President

July Meeting:

Alan Bedgood taught us very clearly how to identify the difference between a Sedge, Rush and Grass. "Sedges have edges, Rushes are round and Grasses have knees that bend to the ground (and are hollow)". It was a terrific presentation which Margot has captured in detail.

Phil Williams' APS Vic Imprensa Award

It was very exciting to be in attendance at the recent APS Vic meeting and to have it announced that Phil Williams has been bestowed the honour of receiving APSVic 2024 Imprensa Award for outstanding service to Australian Native Plants. Phil's contribution to the conservation of Australian plants is immensely significant and it is terrific that now all of Victorian members will be aware of it. Maybe with his permission we can publish the application in a future edition of Gariword. We will recognise this more formally in an upcoming meeting or maybe even at PNFS. Thankyou to John K, Anthea, Wendy and Neil for their time put into this application



APS Vic July Quarterly meeting held in Bendigo.

A group of us were able to attend this lively meeting in which Wendy shares details below. Our state president Miriam and her committee members are in the depths of final preparation planning for the national conference. After the meeting we were able to tour local gardens which of course I chose Marilyn Sprague's. Some pictures here provide a snapshot of the diversity and beauty but can't capture the labour and love and tenacity to forge on after floods and

droughts.





Saturday meetings?

We gained some insight into members' preferences at the last meeting. A sense of preference was indicated for 6 months Saturdays during the colder months and 6 months Tuesday evenings during the warmer months. Maybe we follow daylight savings? For those not attending meetings please send us your thoughts. This will be an agenda item at our next committee meeting.

Note. speakers and venues are booked for Tuesdays for the remainder of 2024.

Social Media



At the moment our social media is focusing on the Pomonal flower show.

We have accounts with both facebook and Instagram.

Fb is the most active. We have had over 3,000 views, 250 engage in some way, 80 comments and over 200 followers. Most of these are from Melbourne with one each from India and Taiwan! Some high profile followers include Costa from Gardening Australia. We have joined 15+ interest groups aligned with Australian plants which broadens our connection with people with the same interest. Some of the comments from our followers include 'we are a group of 4 and have booked for the weekend' / 'Congratulations on celebrating 40 years' / 'sounds great, I will try and get there'.

Please follow us and share our event and posts. Any ideas for content or groups to follow please send to me.

Next Meeting:

*I look forward to seeing you at our **next meeting** on the **20th August at Pomonal Hall 7.30pm.***

Bring your favourite flowers or foliage from your garden and questions ready to ask Helen from Neutrog. We will also spend time on the flower show details including the exciting update that ABC Australia Gardening are wanting to attend.

******Why Grow Australian plants? Shape and Size: from the tallest trees, to shrubs, to groundcovers and grasses the range is enormous.*

-From 'Growing Australian' – a resource for growing a home garden in Victoria. Written by APSVic2009

Fiona Lucas - APS Grampians President Ph: 0418366362 / fionarlucas@gmail.com

40th Pomonal Native Flower Show



Pomonal Native Flower Show Posters have nearly all been distributed and the Stawell Times are coming out next week to do more PR.

On a recent visit to Melbourne I visited Anthony Hooper and Julie Weatherhead at **Peppermint Ridge farm** in Tynong north to see their native food garden and talk about their upcoming visit to the show. She is one of our speakers at the show.



I purchased her book '**Australian Native Food Harvest**' which as well as nutritional analysis of the different plants gives ideas on planning a native food garden and some excellent easy recipes to try at home.



Just waiting on confirmation from Gardening Australia as to whether they will be filming on the Saturday or not. We did offer to set up early so they could film on the Friday but I felt and they agreed you really need the buzz of the whole set up with the plant stalls and market stalls and marquee running as well as the flowers in the hall to create a really good spectacle.

So no early set up!!

Sign up: I will be bringing the roster sheets to the August meeting this Tuesday as the Sept meeting is only a few days before the show. Of course you can still sign up then!

So looking forward to seeing you all on Tuesday

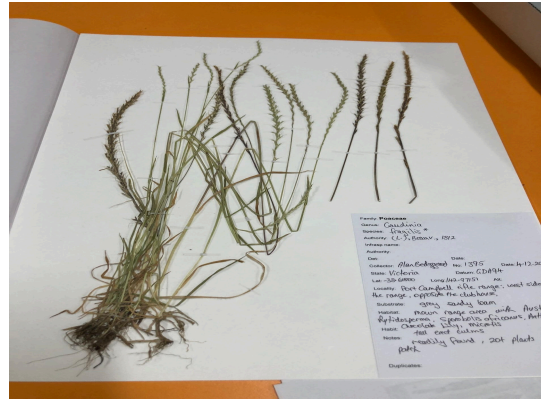
Jocelyn King Flower Show Coordinator

Last Meeting

Saturday 20th July 2024 at Stawell Community House, **Alan Bedggood** Australian Grasses



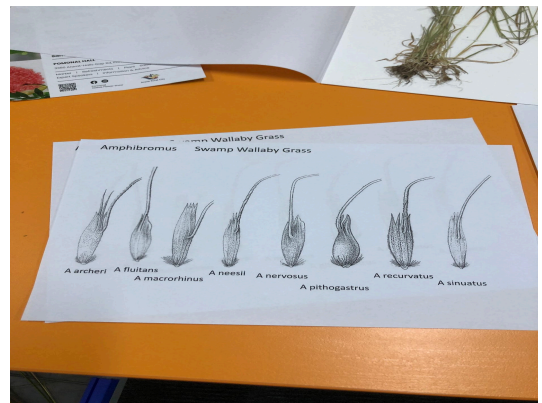
We were very fortunate to have Alan Bedggood as our guest speaker at our July daytime meeting. Alan's background is in horticulture and agriculture, having graduated from Burnley Horticultural College in the 1970's and he then worked for the Dept of Agriculture in wheat and barley breeding. Alan reminded us that grasses directly and indirectly feed the world, from pasture for meat, to the traditional grains of rice, wheat, barley, oats etc. not forgetting the variety of other products like staples of sugar cane, sweet corn, sorghum etc. Alan first described a typical grass flower and the parts of the



(Alan's herbarium specimen)

seed coat - awns, palea and lemma (the husk) and glumes. The nature of these is used for grass identification. Grasses are in the family Poaceae and tend to have more flowers than seed because so many are not fertilised.

In 2015 Alan recognised that the natural occurrence of Australian native grass species was poorly documented and so commenced his collecting and preserving (or pressing) specimen plants for ID. His focus is on Victorian species but he has collected Australia wide. Specimen duplicates of his collections have been provided to the relevant state herbariums.



(Alan's catalogue)

For many of us grass identification is a little daunting but Alan provided useful and practical tips to help with this. He has spent a lot of time preparing working sheets from the Flora of Victoria illustrations (example centre right). Also his catchy rhyme to help separate grasses from other grasslike plants: **“Sedges have edges, rushes are round, grasses have nodes (knees) that bend to the ground.”**

To reinforce this message we were supplied with a wool-tied bundle - a grass, a sedge and a rush. We could see for ourselves how the saying worked. In addition Alan explained that rushes are filled with packed cells while grasses are hollow between nodes. Grasses have leaves with 2 growing points - one at the node, and also have a leaf collar.

As of 2018 worldwide there were 650 genera and 9500 species of grasses, 240 genera and 1394 species



(members Margaret, Sandy and Joan showing the samples of rush, sedge and grass that Alan provided each of us)

(including 352 naturalised) in Australia. 126 genera and 400 species are found in Victoria. Alan noted that this figure has increased further since 2018.

Information about grasses has tended to be with relevant books but today Alan prefers to use the internet 1. Aus Grass 2 - Grasses of Australia and 2. Vic Flora website. In Victoria all native grasses are perennial and a helpful tool to ID is that many weed species are annuals so have a poorer root system and plants will readily pull out. Of course some grassy weeds are perennial too. To identify grasses Alan suggests the following: - Use a dichotomous key (which he demonstrated) and have a good magnifying glass.

- Have a good book **with pictures**
- Ask a more knowledgeable person
- Practice
- Pass on to another person as this helps define your own thinking
- Take an image and put it on iNaturalist. (If the word grass is input Alan is the likely one to provide ID)

For reliable identification, most grasses require the complete flower stem but 3 different images are best, the whole plant, a single flower, and a closeup of the flower.

The native grass Alan chose to feature was Swamp Wallaby grass *Amphibromus* spp. Of which most are endemic to Australia. Wallaby grasses, *Rhynchospora*, have 25 representatives in Victoria. *Austrostipa* has 64 species in Australia. Alan points out that it is not necessary to know all the botanical terms to get an id but you will need that hand lens!

Alan continued his talk with a discussion of grassy weed species, in particular wild oats *Avena* spp. (of which there are 6 species in Victoria but all are introduced), Shivery grasses *Briza* spp. and *Bromus*: with the exception of one species all Bromes have been introduced.

Finally he described the spread of Buffel grass which is an exotic species. It is spreading rapidly throughout Australia and increases fire damage to our native shrubs and trees (particularly mulga) as it is very tall and grows through other plants. If ignited it burns upwards and sets alight to the otherwise more resistant species. Originally a northern Australian weed it has spread south and has now been found just north of Swan Hill and St Arnaud!

Provided for our viewing were examples of his pressed grass specimens, reference material and some A3 pages depicting keys to the differences between SwampWallaby grass species and another on the exotic species so similar in appearance to our native *Austrostipa* - spear grasses.

Overall this was a most informative and interesting talk and one which will have us all grabbing the hand lens to see what we really have in our own backyards.

Flower Table

Neil Marriott talked about what's in flower now. The plants that dominated were hakeas, and correas, many of which defy the frosts and cold weather to flower beautifully at this time of year. Examples included *Hakea laurina*, *H. multilineata*, *H. scoparia*, *Correa glabra* var *turnbullii*, and *C. pulchella*. Neil explained that there are now lots of hybrids in the correas as well. Also featured were the earlier season wattles including the Mt Morgan wattle *Acacia podalyriifolia*.

New APS Grampians member Bryan Rau, who attended our last meeting, is establishing a eucalypt arboretum at Barkly and is **opening to the public on August 31st opening at 10 am with a tour at 2pm. Calling it "Barkly Eucalypt Festival"** further details are available on the facebook page under events. Bryan spoke briefly introducing us to "Nuts about Gums" which is a facebook group focussed on Eucalypts. It currently has a following of over 61,000!

Pomonal Community Nursery

Some exciting seed has been donated by Attila Kapitany towards the Growing for Pomonal Project.

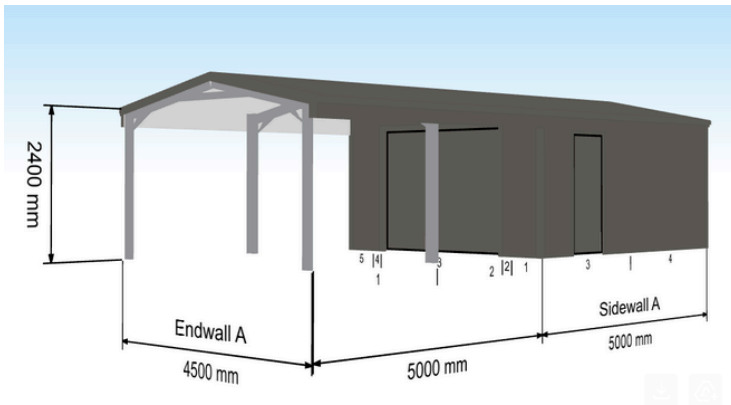
Acacia aphylla
A. gunnii
Brachychiton bidwillii
B. discolor
B. rupestris
Bulbine vagans
Cordyline obtecta
Dietes robinsoniana

Doryanthes palmeri
Eucalyptus macrocarpa
Nitraria billardierii
Tetragona tetragonoides
Xanthorrhoea glauca Wangaratta
X. minor Gippsland
X. quadrangulata

Many thanks to Attila for this kind donation of unusual and very special seeds!



Wednesday work continues...^Phill finishing the new poly skin
 The small igloo is very close to usable. Everyone is eager to sow some seed. John King on his knees, laying donated weed mat.>



The shed has been ordered and is expected late October.

You'd be very welcome to pop in to see the progress or to lend a hand, which includes sowing (as you know, there are not many things more satisfying than watching seeds you have sown grow into little plants). The working bee day and time is every Wednesday between 10am and about 12pm. It has been that for years and will no doubt always be so. There is always something to do and there is always a cuppa and chat.

John King

Grampians Plants

Grevillea confertifolia 'Grampians Grevillea' **Neil Marriott**

For the next in my series of articles on our wonderful Grampians plant species, it is hard to go past the beautiful *Grevillea confertifolia* officially known as the Grampians Grevillea!

Despite its popularity in the garden as a showy and reliable small shrub, it is in fact quite uncommon in the wild. In fact many people have never seen it in the wild. This is probably due to preference for rocky, moist sites, often in elevated parts of the mountains where it may be found growing along streams and creeklines. We were all thrilled to see it on our group's walk to Gar Falls on the western slopes of the Mt Difficult Range a couple of years ago. Here it was growing along the creek in wet sites with lots of sedges and moisture-loving species.

There are at least three distinct forms of *Grevillea confertifolia* – there is an upright form that occurs along creeks and streams on either side of the Mt Difficult Range. I have found this form along Troopers Creek south of the Gar Falls track. This form grows to around 1-1.5m tall and around 0.6-1m wide. The form from Troopers Creek has very deep, almost purple flowers and is most beautiful. I have been growing this form in my garden for at least 20 years and it has proven to be one of the hardiest forms.

***Grevillea confertifolia* – low form>**



<*Grevillea confertifolia* – deep mauve upright form

The second form of *Grevillea confertifolia* is the low form. This is probably the most widespread and the one we found on the Gar Falls track. It grows in a similar habitat to the upright form, but is usually in more open areas with almost full sun. This form also grows along Goat Track on the eastern side of the Victoria Range. It usually has paler, but still very attractive mauve flowers. I have found that this form is not as drought tolerant as the upright form, with most of my plants succumbing during last summer's hot, dry conditions.

***Grevillea confertifolia* mauve, prostrate form**



The third and final form is quite rare and is only found along drainage lines on the top of Mt William and the Major Mitchell Plateau. It is unique in its quite prostrate habit, probably as a response to the exposed, subalpine community that it grows in, exposed to gale force winds and occasional snow dumps in the winter months. I have found that this form is also not drought tolerant, and my plants are all grafted onto hardy rootstocks. This form differs in its prostrate habit, broader leaves and pale, often pale pink

flowers. It may soon be recognised as a distinct subspecies once DNA evidence has been collected and analysed.

Member matters

APS Vic 1/4ly - details of interest from your delegate Wendy.

Bendigo APS marked their 50th year and hosted this quarterly meeting on 27 July at the Greyhound Race Track, an unexpectedly entertaining venue. Included was the Saturday morning meeting and Saturday night Dinner plus 4 gardens and parks to visit.

- The meeting began with the District Group rap and Fiona was welcomed to her first APSV meeting and gave an impressive update on Grampians group's position and our activities this year.
- Then came the announcement of this year's honours and (at last) ***Phil Williams received the Impresa Award*** for outstanding service to Australian Native Plants - Well deserved. Also Ian Evans (who was our very popular Brachychiton speaker last year) was honoured with life membership.
- In conservation, does your local area have ***valuable flora/habitat*** that isn't receiving the care it deserves? APS Tasmania has compiled a methodology of steps to take, and the professional guidance needed, to ensure that responsible authorities do address up-to-date legislation and regulations in conservation. Refer Neil Marriott
- ***Model rules*** of incorporation for groups with an ABN: APS Victoria as well as all district groups are affected by tax changes, and a subcommittee volunteered to research and advise us on action to take. There's a possibility that our society's aims in conservation and education may reduce the tax effect.

Note all memberships expire annually 30 June. ***Renew online*** before August 31st to receive continuous benefit. Log in on members page or contact John King, Membership Officer..

- Remember all members can order 6 ***seed packets*** a year, so check the species available on the website - members page.

Grampians Group Calendar 2024

We meet monthly on the 3rd Tuesday 7.30pm, except 3rd Saturday 2pm in June & July, recess January
Even months at PH (Pomonal Hall, Ararat-Halls Gap Rd) or a member's garden.
Odd months at SNH (Stawell Neighbourhood House, 42 Sloane Street Stawell) or a member's garden.
Outings/activities communicated in this newsletter; subject to change - eg with an eye on the weather

March Elia Pirtle "Inland Islands and and Leafy Bridges"

April Royce Raleigh "Hakeas"

May Miriam Ford "Marvellous Mint Bushes"

June Marilyn Sprague 'Growing Australian Native Flowers for Floristry'

July Alan Bedggood Discovering Grasses and pressing specimens

August Tue 20th Meeting 7.30pm: PH, Speaker Helen Lovell, Neutrog TBC

September Sat, 7th Sun 8th Outing: Currency Creek Arboretum, SA

September Tue 17th Meeting 7.30pm: SNH, Show planning + Neil Marriott 'My Top 20 Grevilleas'

September Sat 21st Sun 22nd Event: **40th Pomonal Native Flower Show with Clarence Slockee +**

October Tue 15th Meeting 7.30pm: PH, Ben Gunn 'Archaeology of the Grampians/Gariwerd'

November Tue 19th Meeting 7.30pm: SNH, Phil & Monica Coleman 'Our travels in the Top End'

December Tue 17th Christmas breakup 5.30pm: 693 Panrock Reservoir Rd Black Range via Stawell

Also APS Victoria (APSV) Committee of Management quarterly meetings - all members welcome:

March quarterly meeting

May quarterly meeting at Mt Martha Community House 9.30am

July quarterly weekend hosted by APS Bendigo

23rd and 24th November, quarterly weekend & AGM, hosted by APS Wangaratta.

32nd ANPSA National Biennial Conference hosted by APS Victoria

30th September to 4th October at The Round, Nunawading. "Gardens for Life"

2025 - 15th FJC Rogers Seminar: "Epacridaceae" hosted by APS Mornington Peninsula

2026 - South Australia Biennial conference will be held in Alice Springs.

[See also plant shows & sales of other APS Vic district groups](#)

To all members: your contributions are sought for future GariWords,
Your pictures, experiences and research are welcome; send to
grampiansnewsletter@apsvic.org.au

Thank you to those who contributed to this edition

Grevillea dimorpha painting by our member the late Ena Graham, botanic artist



APS Vic Grampians Committee

President: Fiona Lucas

Hall Committee Representative: Lisa Ashdowne

Vice President: Neil Marriott

Flower-show coordinator: [Jocelyn King](#)

Secretary: [Margot Galletly](#)

Neil Macumber

Treasurer: John King

Newsletter Editor: [Wendy Marriott](#)

Memberships: John King

Ross Simpson